

KS-200A Ship AIS Data Programming

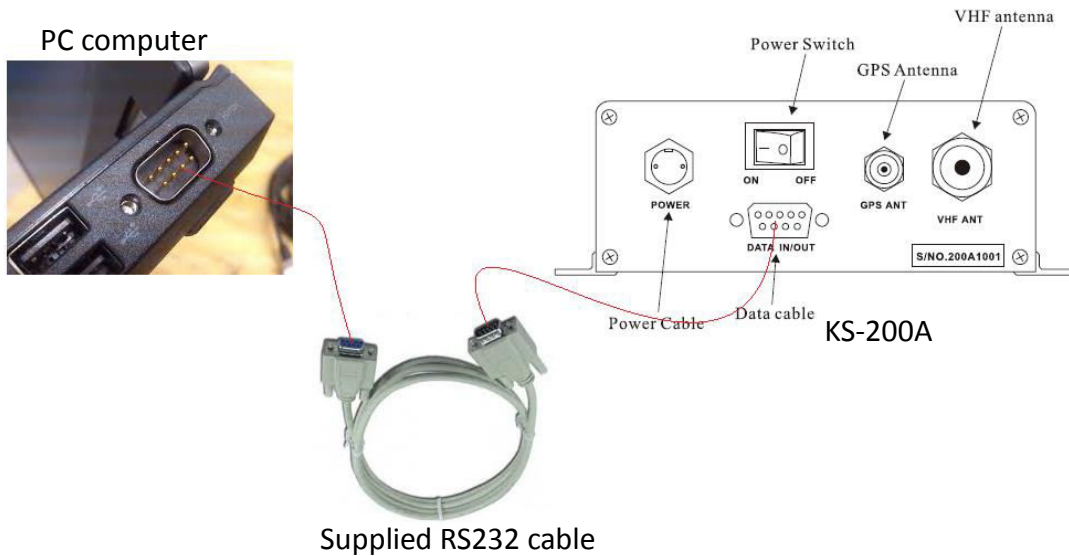
ONWA AIS CONFIGURE

Before using KS-200A, you have to program Ship's data by a PC computer first. You can use aisconfig-Vx.x.exe to program ship's data onto KS-200A.

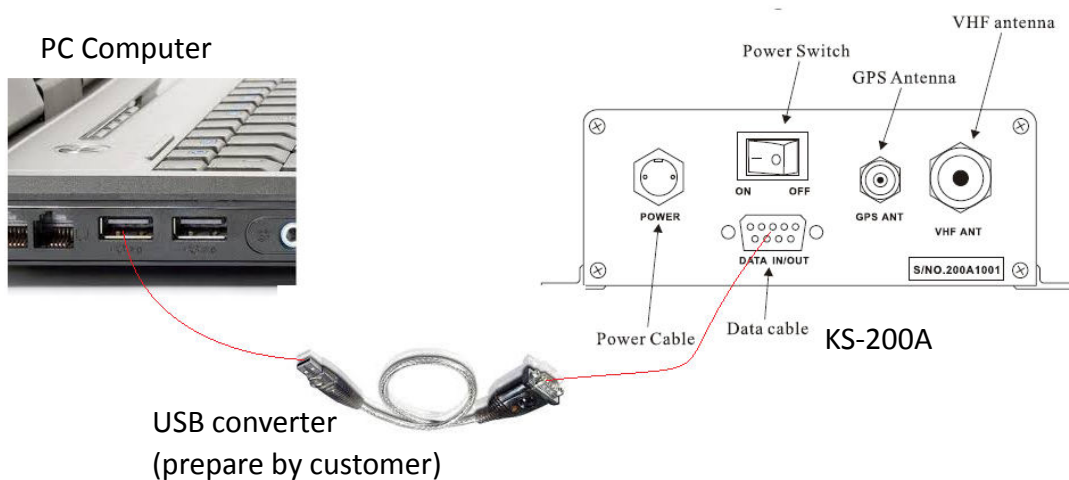
1. PC computer system requirement
 - Microsoft Windows XP SP2 / Windows 7
 - Resolution not less than : 1024x768
 - At least one serial port (or convert from USB)

2. Connection

- Connect KS-200A to your PC computer via serial port or USB converter



- Or connect KS-200A top your PC computer via a USB converter (you need to prepare by yourselves)

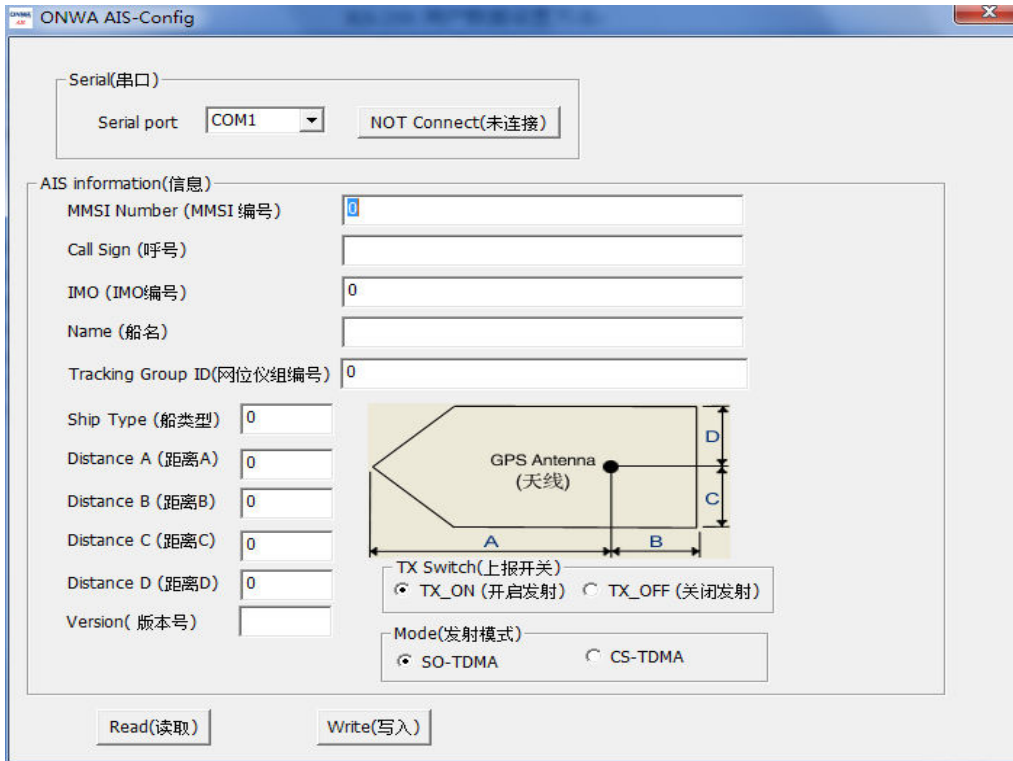


3. Configuration

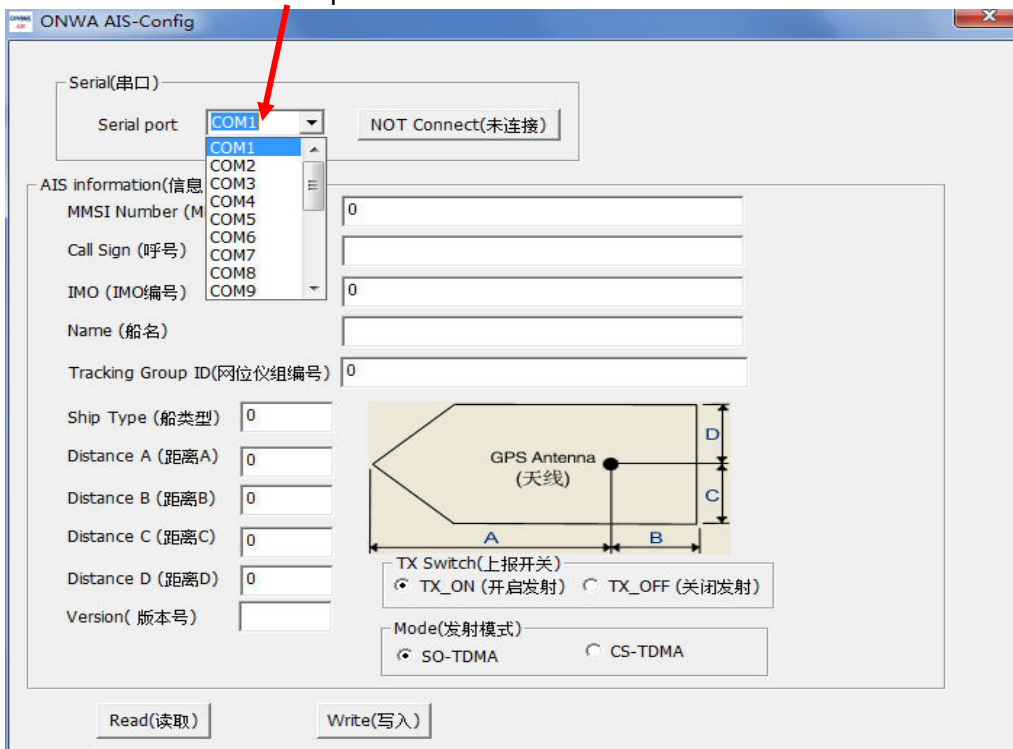
3.1 Switch on your PC computer and KS-200A

3.2 Insert the supplied CD into your PC computer or download the aisconfig-Vx.x.exe onto your PC computer

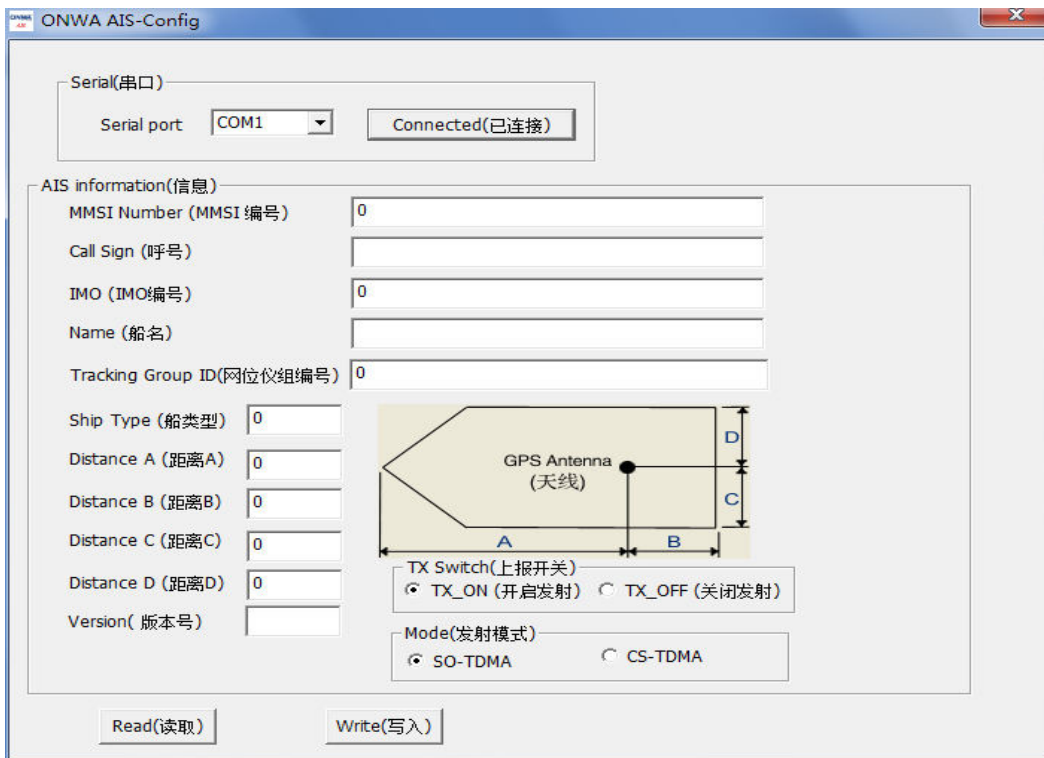
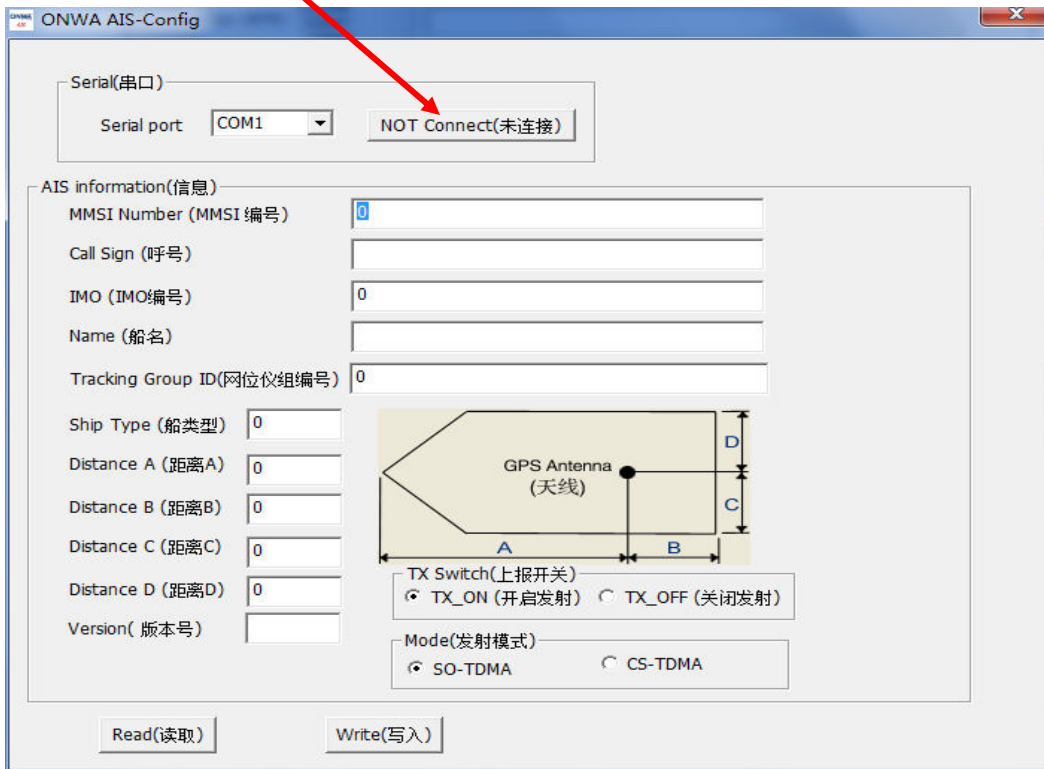
3.3 Run aisconfig-Vx.x.exe (Direct Run, installation is not require) , the below program will appear.



3.4 Choose serial port in PC that connected KS-200A.



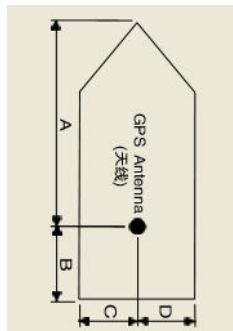
3.5 Click the [NOT Connect] button, and then it will change to [Connected]



3.6 Click [Read], will appear “Successful Reading!”, then you can see data in KS-200A.



3.7 Input your MMSI, IMO, CALL SIGN, NAME, Ship Type data and VHF antenna position A, B, C, D as below



3.8 After input all data, click [Write] to save the edited data onto KS-200A. A “Successful Writing!” message will appear if the edited data is written onto KS-200A successfully.

4. FINISHED

